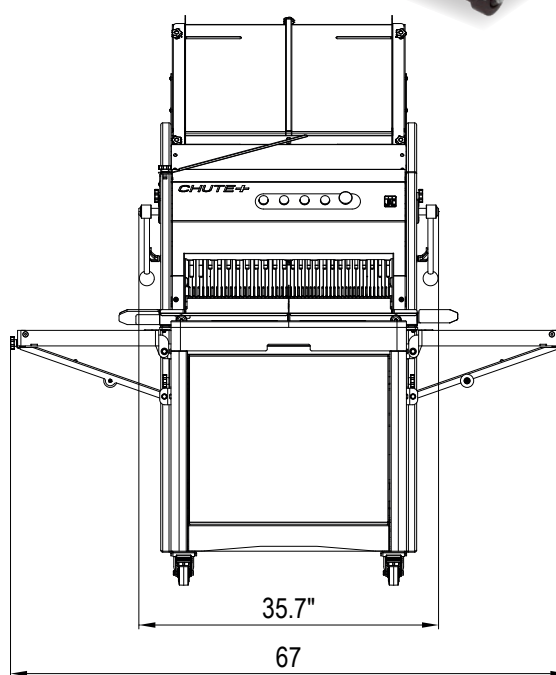
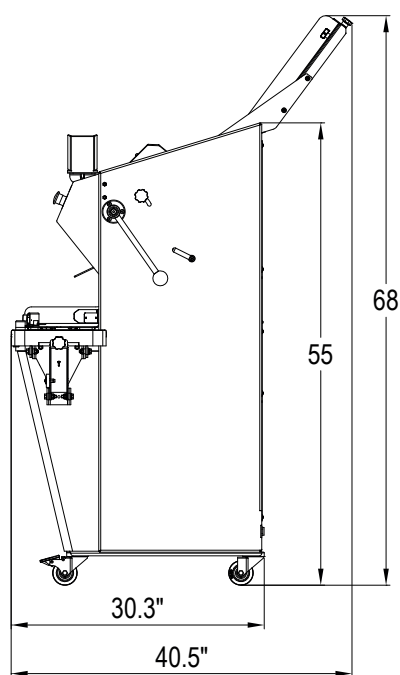




CHUTE+

Continuous cut slicer

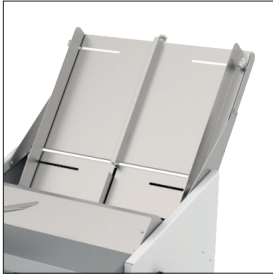
- ✓ Dual infeed Gravity Feed slicer
- ✓ One slicer two slice thicknesses
- ✓ Minimum space requirement
- ✓ Ergonomic
- ✓ Large capacity crumb tray
- ✓ 5 year parts / 1 year labor warranty



Traditionally Innovative

www.jac-machines.com

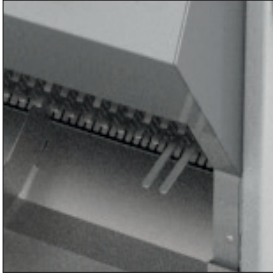
office@jac-machines.com



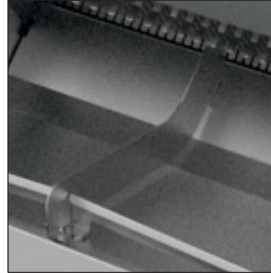
Loading ramp
Fitted with side guides, increases loading capacity.



Removable crumb collector
Accessible by tilting the front cylinder-assisted door. 4.75 gallons capacity.



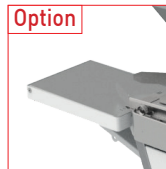
Adjustable bread holder
Adjusts the pressure on the bread to ensure a clean, precise quality of cut.



Bread exit guides



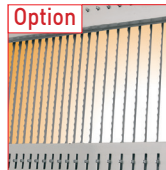
Lever on the side
Allows the final loaf to be cut completely safely.



Option **Fold down bag blowing table**
Saves packaging time.



Option **Double fold down bag blowing table**
Saves packaging time.



Option **Double slice thickness**
Allows two different slicing widths on the same machine

FEATURES

CHUTE+ 600

Max. loaf dimensions in in (L x H)	23.6" x 6.3"
Max. loaf dual slice dimensions in in (L x H)	11.8" x 6.3"
Motor power in kW	0.49
Type of motor	1ph/120V/60Hz/7.3A
Net weight in lbs	507

CHOICES

Slice thickness options | from 3/8" to 5/8"

OPTIONS

Fold down bag blowing table	•
Double fold down bag blowing table	•
Double slice thickness	•
Special slice thickness (more than 5/8 ")	•