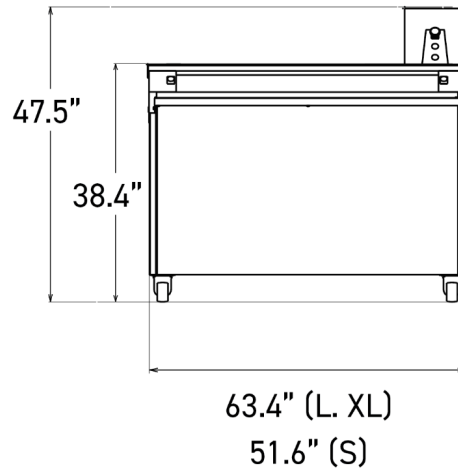
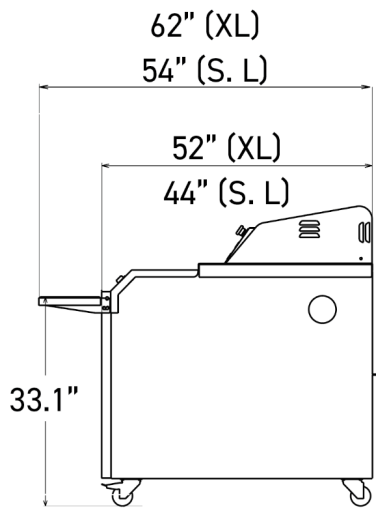


MB

- ✓ Robust and silent
- ✓ Maximum respect for the dough's structure
- ✓ Compact
- ✓ Two trough sizes available
- ✓ Fitted with sockets to connect a moulder and divider
- ✓ 5 years parts / 1 year labor warranty





SPECIFICATIONS

Synthetic felt troughs		•
Motor power in kW		0.25
Type of motor		3ph/208V/60Hz/1.32A
	Net weight in lbs	551
	Maximum weight of dough pieces in ounces	33.5
	Length/width of troughs in in	41.7 x 5.5
	Total number of troughs	26
12.35 oz* dough pieces	Number of dough pieces per trough	7
	Maximum capacity	182
19.5 oz* dough pieces	Number of dough pieces per trough	6
	Maximum capacity	156
26.5 oz* dough pieces	Number of dough pieces per trough	5
	Maximum capacity	130
33.5 oz* dough pieces	Number of dough pieces per trough	4
	Maximum capacity	104
Options (Additional cost)	Germicidal UV lamp with protection and air extractor, Folding rounding tray, Foot control, Monofilament troughs, Water-repellent troughs	

MAIN STRENGTHS



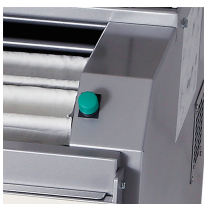
Two three-phase power sockets

Facilitates the connection of moulder and divider.



Bronze ring gear wheel

Reduces friction and extends service life.



Controls (right/left)

Simple and ergonomic